

A large, stylized version of the NUMI WORLD logo. The 'N' is a green 3D sphere with a white 'N' cutout. The words 'NUMI' and 'WORLD' are in a dark blue, bold, sans-serif font with a glowing, circuit-like texture. The background features a faint, glowing globe and abstract blue lines.

Where Finance Gets Exciting

Numi Worlds operates with a unique approach aimed at generating profits through diverse investment avenues, catering to its investors' interests. This innovative company strategically allocates collected funds into several promising sectors, ensuring both profitability and sustainability.

Numi Worlds prioritizes transparency and investor satisfaction by offering profit-sharing mechanisms. As the company generates profits from its various ventures, investors receive returns based on their contributions. This approach not only aligns the interests of Numi World with its investors but also fosters trust and long-term partnerships.

Numi Worlds stands out in the investment landscape by diversifying its activities across forex trading, land transactions, development projects, real estate investments, and sustainable agriculture like earthworm composting. By focusing on profitability, sustainability, and investor satisfaction, Numi World continues to pave the way for innovative investment opportunities in multiple sectors.

Vision

Numi Worlds envisions empowering investors amidst economic challenges like inflation and unemployment, offering financial freedom through innovative solutions. By leveraging cutting-edge technologies and strategic investments, Numi Worlds aims to secure prosperity and stability for all, fostering resilience and growth in a rapidly changing global landscape.

Mission

Numi Worlds mission is to foster financial growth through sustainable practices, driving social and economic development while prioritizing ethical and impactful initiatives worldwide.





NUMI TERRITORY INDUSTRIES

The service sectors of economy

Numi Worlds engages in forex trading, leveraging its expertise in the foreign exchange markets to capitalize on fluctuations in currency values. With a team of experienced traders and robust analytics, the company aims to secure profitable returns for its investors.



NUMI TERRITORY INDUSTRIES

The service sectors of economy

Another key focus area for Numi Worlds is the buying and selling of land. This involves identifying undervalued properties, negotiating favorable deals, and selling them at opportune times to maximize returns. The company's keen understanding of real estate dynamics helps in making informed investment decisions in this sector.

Land Swap



NUMI TERRITORY INDUSTRIES

The service sectors of economy

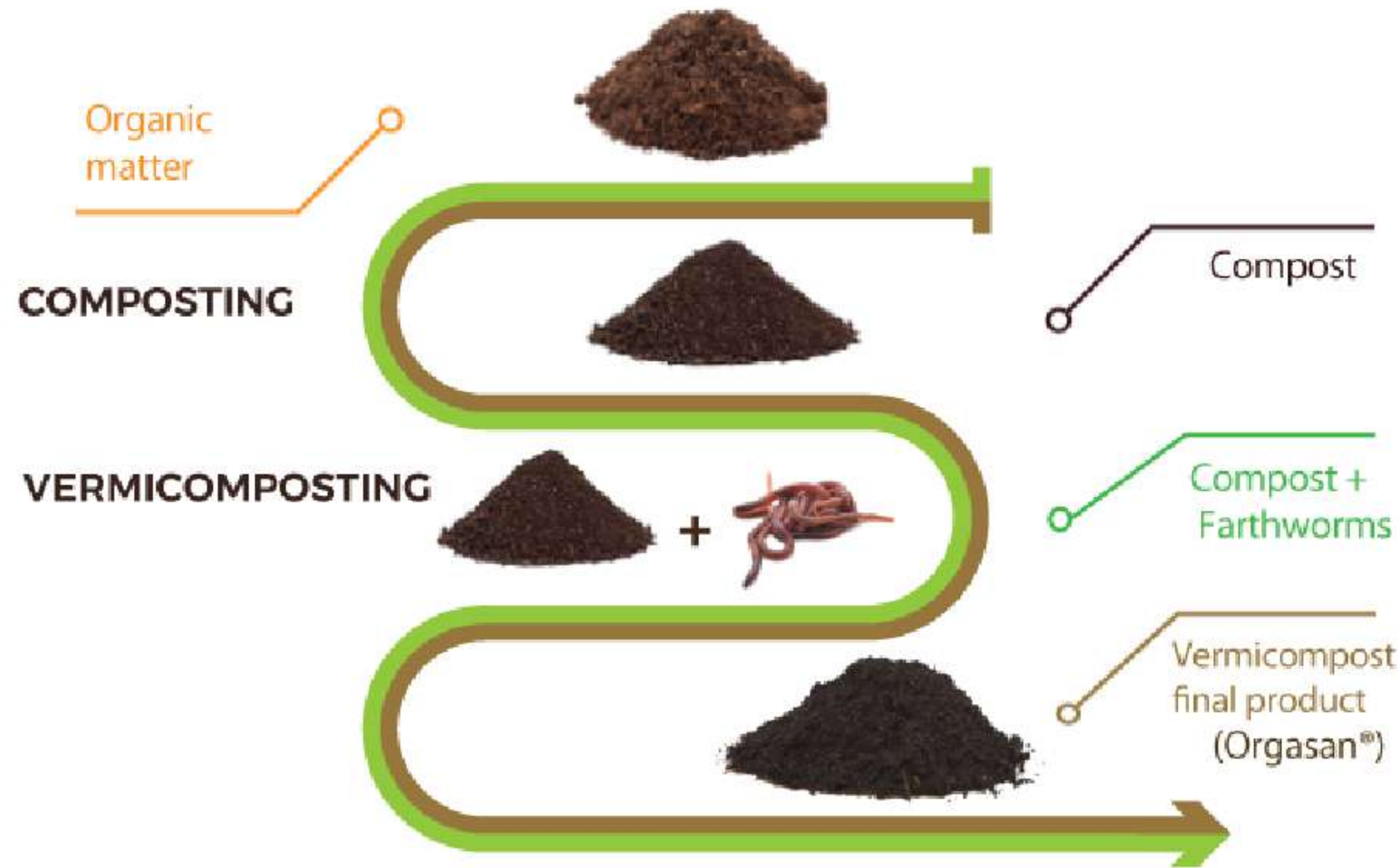
Numi Worlds also ventures into land development projects. This includes converting raw land into residential, commercial, or mixed-use properties. Through careful planning, zoning compliance, and construction management, the company adds significant value to the properties, thereby increasing their market appeal and profitability upon sale or lease.



NUMI TERRITORY INDUSTRIES

The service sectors of economy

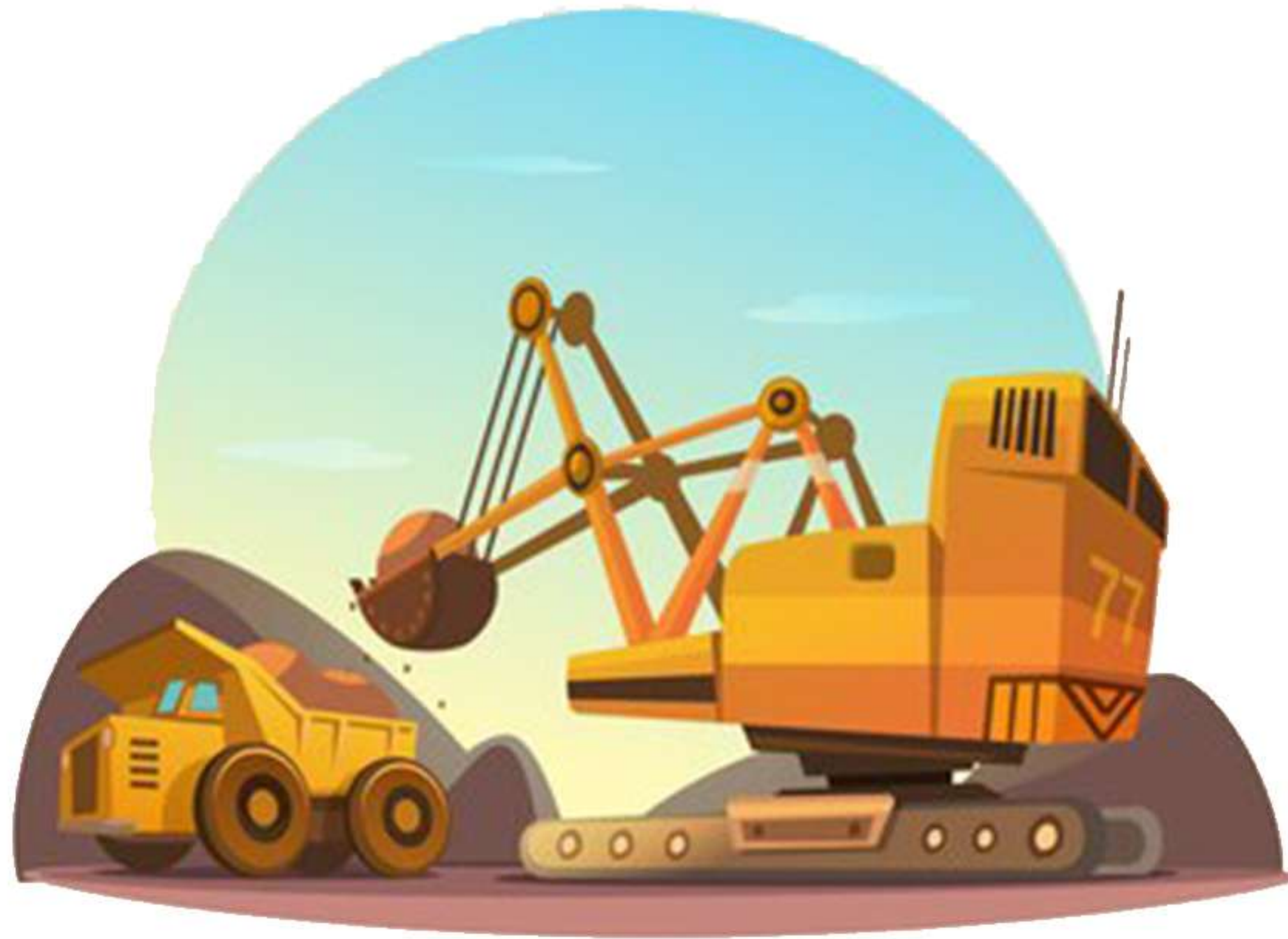
In addition to land development, Numi Worlds invests in established real estate opportunities. This may involve acquiring income-generating properties such as rental apartments, office spaces, or retail units. By managing these assets effectively and optimizing rental income, the company aims to provide steady cash flow and potential capital appreciation to its investors.



NUMI TERRITORY INDUSTRIES

The service sectors of economy

Diversifying its portfolio further, Numi Worlds invests in sustainable agriculture practices, such as earthworm composting. This eco-friendly method produces nutrient-rich organic fertilizer, which is in high demand among environmentally conscious farmers and gardeners. The company's involvement in this sector not only promotes sustainable agriculture but also generates steady revenue streams.



NUMI TERRITORY INDUSTRIES

The service sectors of economy

Numi Worlds' profit-sharing model presents a novel approach in the sand mining industry, aligning its investor interests with the company's success and promoting a more inclusive and responsible business strategy.

Start with
50\$
& above



Placements will be with BEP-20 dAPP Wallet

- 1. Dividend Income**
- 2. Referral Income**
- 3. Daily Level Income**
- 4. Rank & Rewards**



**Get 0.33% daily
10% per month**

upto 2 times of your investment



Get



**of invested amount
from your every direct refer**



Daily Level Income

LEVELS	DAILY INCOME	CONDITION
Level 1	33%	1 Direct
Level 2	25%	-
Level 3	20%	+1 Direct
Level 4	15%	-
Level 5	10%	+1 Direct
Level 6	2%	-
Level 7	2%	+1 Direct
Level 8	2%	-
Level 9	2%	+1 Direct
Level 10	2%	-
Level 11	3%	+1 Direct
Level 12	3%	-
Level 13	3%	+1 Direct
Level 14	3%	-
Level 15	3%	+1 Direct
Level 16	4%	-
Level 17	4%	+1 Direct
Level 18	4%	-
Level 19	4%	+1 Direct
Level 20	4%	-
Level 21	5%	-

Rank & Rewards

MATCHING

1,000\$
 2,500\$
 5,000\$
 12,000\$
 25,000\$
 75,000\$
 1,75,000\$
 5,00,000\$
 10,00,000\$
 20,00,000\$
 40,00,000\$
 80,00,000\$
 1,50,00,000\$
 2,50,00,000\$

RANK

Beginner
 Co-ordinator
 Manager
 Sr. Manager
 Executive
 Chief Executive
 Vice President
 President
 Chairman
 Amabassor
 Crown Amabassor
 Diamond
 Blue Diamond
 King

REWARD

2\$ X 20 weeks
 5\$ X 20 weeks
 10\$ X 20 weeks
 25\$ X 20 weeks
 50\$ X 20 weeks
 100\$ X 20 weeks
 200\$ X 20 weeks
 400\$ X 20 weeks
 600\$ X 20 weeks
 1000\$ X 20 weeks
 2000\$ X 20 weeks
 4000\$ X 20 weeks
 8000\$ X 20 weeks
 10000\$ X 20 weeks

Rewards will be matched with total investments from Big Leg versus total investments from rest of other Legs

There is total rewards of 26,392\$ X 20 weeks = 5,27,840\$

www.numiworlods.live

- 1. ID will be placed with USDT (Bep-20) dAPP wallet**
- 2. Withdrawals will be given in USDT (Bep-20)**
- 3. After 300% of your investment including (Dividend Income, Referral Income, Daily Level Income and Rewards) you need to reinvest for further profits**
- 4. Minimum withdrawal will be of 10\$ & multiple of 10\$**
- 5. Withdrawals will be from Monday to Friday**
- 6. Processing time for withdrawal will be from 30 minutes to 24 hours**
- 7. There will be deduction of 10% as Admin charge during withdrawals**
- 8. There will be deduction of 5% during fund transfer**
- 9. Minimum fund transfer from one ID to other ID will be 5\$ & above**
- 10. There is needed total 10 Direct investments for Daily Level Income upto 21 Levels**

For info visit
www.numiworlds.live

Contact us at
support@numiworlds.live

Let us grow together..... Join us